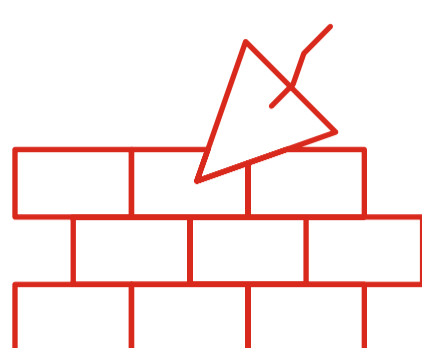


The Ripple Effect of achieving a
**Princess Royal
Training Award**

The Princess Royal Training Awards are a flagship programme delivered by the City & Guilds Foundation in association with the President of City & Guilds, HRH the Princess Royal

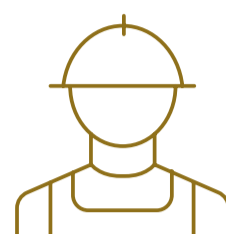
Passionate

about investing in apprentices and plugging skills gaps in industry



Above and Beyond

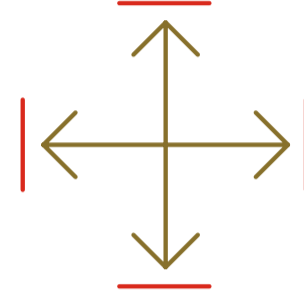
Lee Marley Brickwork has:



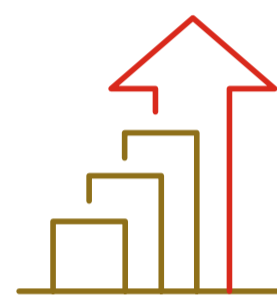
Developed a high quality apprenticeship programme to develop competent employees and reduce staff turnover



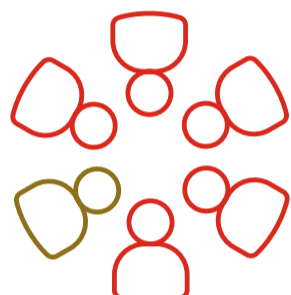
Responded to pandemic by significantly increasing collaborations with colleges, up from 2 in 2020 to 15 in 2022



Impact of programme led to the development of a specialist quantity surveying apprenticeship in 2020



Increased apprentice starts from 5 in 2016 to 17 in 2021



Approximately 70 apprentices working for the business

Winner

A Lee Marley apprentice has gone on to win the Association of Bricklaying Contractor's Apprentice of the Year for 2022

Opportunities

"Some of our bricklaying apprentices want to stay as bricklayers and that's great; we will always need bricklayers. But some apprentices want to go on to get supervisory qualifications and we now have trainees progressing to Foreman roles in the business."

Christian Hatherall Good, Training Manager



Wrap around support

The business believes in a holistic approach and offers life skills training to develop apprentices' confidence and ensure they are work-ready.

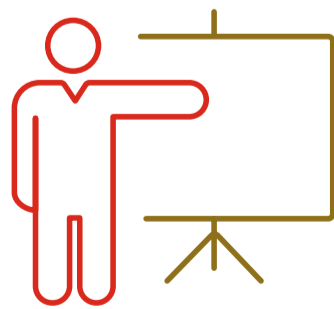
Training covers:

- Managing money and budgeting
- Healthy eating
- Communication skills
- How to effectively represent themselves and the company.

The company goes above and beyond providing apprentices with:

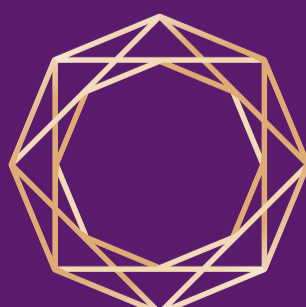
- A comprehensive set of tools to make them an immediate asset to sites
- Paid travel to sites to reduce financial strain
- Extra curriculum subjects such as scaffolding or latest brickwork techniques and exposure to latest industry products on offer.

In a largely male-dominated industry, Lee Marley proactively recruits women and **11% of its workforce is female.**



Leading from the Top

Lee Marley believes in continually learning and improving his own skills and is currently undertaking a level 7 qualification in Construction Management.



PRINCESS ROYAL
TRAINING AWARD

'This programme has really helped me and given me a path in life.'

Lee Marley apprentice